

TRIUMPH 5-F6

Block bottom bag machine



The TRIUMPH 5-F6's powerful innovations deliver efficient productivity.



The TRIUMPH 5-F6 marks a new chapter in the history of the TRIUMPH series. This new generation of machines produces medium- and large-sized block bottom bags as well as carrier bags with up to three layers.

Ongoing development at GARANT along with the use of SERVO technology make the TRIUMPH 5-F6 the most advanced and innovative paper bag machine in this format range. With significantly reduced changeover times and increased output, the TRIUMPH 5-F6 is ideally positioned for the future.

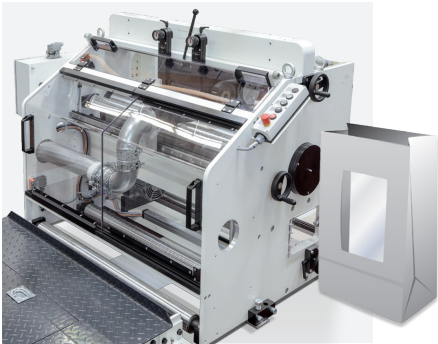
The TRIUMPH 5-F6 can be equipped with various additional devices as well as an inline printer to meet customer specific needs.

Format ranges for the TRIUMPH 5-F6

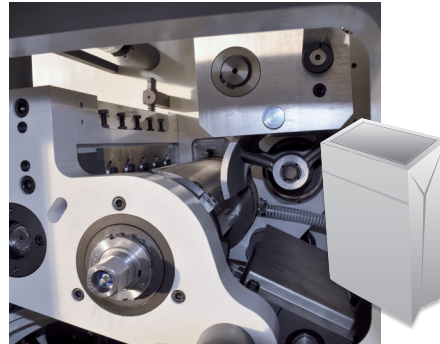
Bag width	7.09–18.11 inch	180–460 mm
Bottom width	2.76–10.00 inch	70–255 mm
Cut-off length	12.60–30.31 inch	320–770 mm

Optional additional devices

SERVO window die cut unit



Bottom patch unit



Flat or twisted handle unit



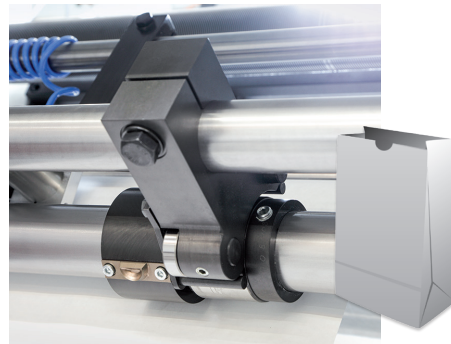
**Inline printer
LINAFLIX NL**



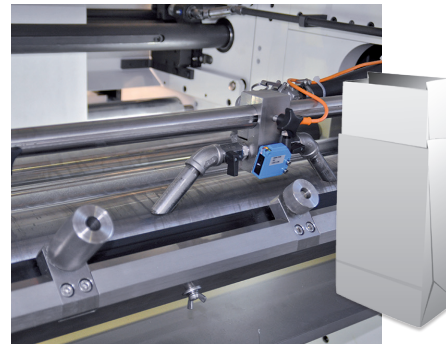
Non-stop splicer



Thumb hole unit



**Feeding unit/
cross pasting**



**Fully-automatic inspection
and packaging system**



Format ranges for all TRIUMPH models

		TRIUMPH 2B	TRIUMPH 2-T8	TRIUMPH 3 MR	TRIUMPH e.BAG	TRIUMPH 5-F6	TRIUMPH 5 XB
Bag width	[mm]	70–230	80–280	105–320	180–460	180–460	320–540
Bottom width	[mm]	40–140	50–170	55–180	70–255	70–255	120–350
Cut-off length	[mm]	200–470	250–550	240–650	320–770	320–770	420–770
Roll width	[mm]	max. 770	max. 920	max. 1070	max. 1450	max. 1450	max. 1520
Roll diameter	[mm]	max. 1300	max. 1300	max. 1300	max. 1300	max. 1300	max. 1300

		TRIUMPH 2B	TRIUMPH 2-T8	TRIUMPH 3 MR	TRIUMPH e.BAG	TRIUMPH 5-F6	TRIUMPH 5 XB
Bag width	[inch]	2.76–9.06	3.15–11.02	4.13–12.60	7.09–18.11	7.09–18.11	12.60–21.26
Bottom width	[inch]	1.57–5.51	1.97–6.69	2.17–7.09	2.76–10.00	2.76–10.00	4.72–13.78
Cut-off length	[inch]	7.87–18.50	9.84–21.65	9.45–25.59	12.60–30.31	12.60–30.31	16.54–30.31
Roll width	[inch]	max. 30.31	max. 36.22	max. 42.13	max. 57.09	max. 57.09	max. 59.84
Roll diameter	[inch]	max. 51.18	max. 51.18	max. 51.18	max. 51.18	max. 51.18	max. 51.18