

TRIUMPH 2-T8

Block bottom bag machine



Users of the **TRIUMPH 2-T8** are easily convinced of the machine's value by the servomotors and the **automation features** offered for **ease of operation**.



With the TRIUMPH 2-T8, developed in 2015, GARANT presents a block bottom bag machine which adapts perfectly to market requirements. Due to its extended cut-off length, the TRIUMPH 2-T8 is ideal for the increasingly small batch sizes and the quickly changing order situations. Numerous servomotors permit a high degree of automation. The TRIUMPH 2-T8 offers itself as a flexible machine with short set-up times.

The TRIUMPH 2-T8 can be equipped with various additional devices as well as an inline printer to meet customer specific needs.

Format ranges for the TRIUMPH 2-T8

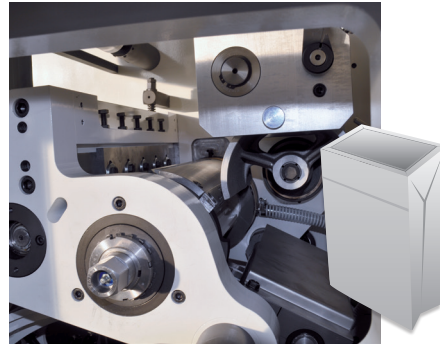
Bag width	3.15–11.02 inch	80–280 mm
Bottom width	1.97–6.69 inch	50–170 mm
Cut-off length	9.84–21.65 inch	250–550 mm

Optional additional devices

SERVO window die cut unit



Bottom patch unit



Flat or twisted handle unit



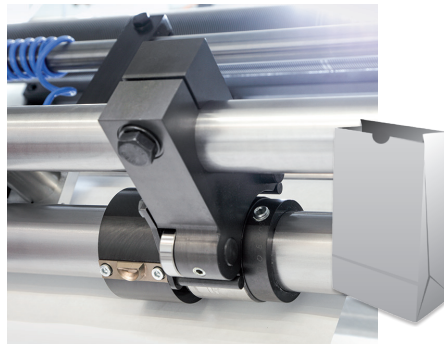
SERVO grip hole punching unit with reinforcement patch



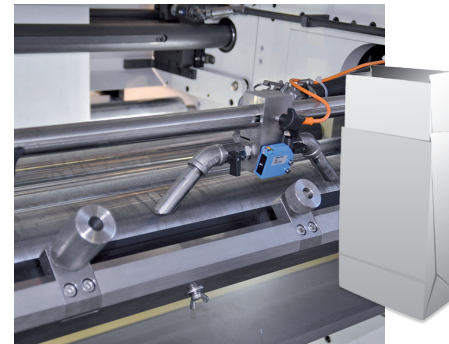
**Inline printer
LINAFLX NL**



Thumb hole unit



**Feeding unit/
cross pasting**



Format ranges for all TRIUMPH models

		TRIUMPH 2B	TRIUMPH 2-T8	TRIUMPH 3 MR	TRIUMPH e.BAG	TRIUMPH 5-F6	TRIUMPH 5 XB
Bag width	[mm]	70–230	80–280	105–320	180–460	180–460	320–540
Bottom width	[mm]	40–140	50–170	55–180	70–255	70–255	120–350
Cut-off length	[mm]	200–470	250–550	240–650	320–770	320–770	420–770
Roll width	[mm]	max. 770	max. 920	max. 1070	max. 1450	max. 1450	max. 1520
Roll diameter	[mm]	max. 1300	max. 1300	max. 1300	max. 1300	max. 1300	max. 1300

		TRIUMPH 2B	TRIUMPH 2-T8	TRIUMPH 3 MR	TRIUMPH e.BAG	TRIUMPH 5-F6	TRIUMPH 5 XB
Bag width	[inch]	2.76–9.06	3.15–11.02	4.13–12.60	7.09–18.11	7.09–18.11	12.60–21.26
Bottom width	[inch]	1.57–5.51	1.97–6.69	2.17–7.09	2.76–10.00	2.76–10.00	4.72–13.78
Cut-off length	[inch]	7.87–18.50	9.84–21.65	9.45–25.59	12.60–30.31	12.60–30.31	16.54–30.31
Roll width	[inch]	max. 30.31	max. 36.22	max. 42.13	max. 57.09	max. 57.09	max. 59.84
Roll diameter	[inch]	max. 51.18	max. 51.18	max. 51.18	max. 51.18	max. 51.18	max. 51.18

Garant Maschinenhandel GmbH

Gewerbepark Antrup 17 · 49525 Lengerich · Germany · Tel.: +49 5481 809-0 · Fax: +49 5481 809-8109
 info@garant-maschinen.de · garant.wh.group